

October 19, 2009

**TO:** ALL DODGE and CHRYSLER DEALERS

**FROM:** SERVICE OPERATIONS

**SUBJECT:** RAPID RESPONSE TRANSMITTAL / SERVICE ACTION #09-047 REV. B  
Roof Molding Paint Cracking

**THIS IS A REVISION TO RAPID RESPONSE TRANSMITTAL #09-047 REV. A AUGUST 24, 2009, WHICH SHOULD BE REMOVED FROM YOUR FILES. THIS IS A COMPLETE REVISION.**

**INVOLVED VEHICLES:**

2009 (LX) 300/300C  
2009 (LC) Challenger

**NOTE:** This Service Action affects sold and unsold vehicles.

**NOTE:** The VIN List is available on DealerCONNECT for all affected dealers. The VIN List has been inserted in the Service Tab under Rapid Response Transmittals. The dealers receiving the Rapid Response Transmittal Service Action are the "Ship To" dealers and the VIN's listed are specific to their dealership. All involved vehicles will be loaded into the VIP system.

**NOTE:** This should be a top priority and be completed prior to sale to avoid suspect vehicles being delivered to customers.

**DISCUSSION:**

A number of vehicles were shipped with roof molding paint that may crack due to an excessive amount of clear coat. Dealers are required to inspect and if necessary, replace the molding(s). Only a small percentage of vehicles are expected to need new molding(s).

**PARTS REQUIRED:**

AR (1)	1GD40(TRM)AD	Molding, Right Roof <b>(Challenger Models Only)</b>
AR (1)	1GD41(TRM)AD	Molding, Left Roof <b>(Challenger Models Only)</b>
AR (1 or 2)	1DZ14(TRM)AB	Molding, Right or Left Roof <b>(300 Models Only)</b>
1	08984	3M General Purpose Adhesive Cleaner or Equivalent

**NOTE:** Replace the TRM section of the part number above with the appropriate paint code found below to obtain the correct color molding.

**Paint Codes** - GBS - Deep Water Blue, ARH - Inferno Red, WS2 - Bright Silver, SW1 - Stone White AXR Brilliant Black, FDT- Dark Titanium, FLC- Hemi Orange, FQD- Surf Blue, ZR3 - High Performance Red, EBG- Clearwater Blue, FKG - Light Sandstone, XWG - Cool Vanilla.

## SPECIAL TOOLS / EQUIPMENT REQUIRED:

1 C-4755 Trim Stick

## REPAIR PROCEDURE:

1. Inspect both upper roof moldings for paint cracking.
2. Is the paint cracking as shown in (Fig. 1)?
  - a. YES – Proceed with the Repair.
  - b. NO – Return vehicle to Inventory.

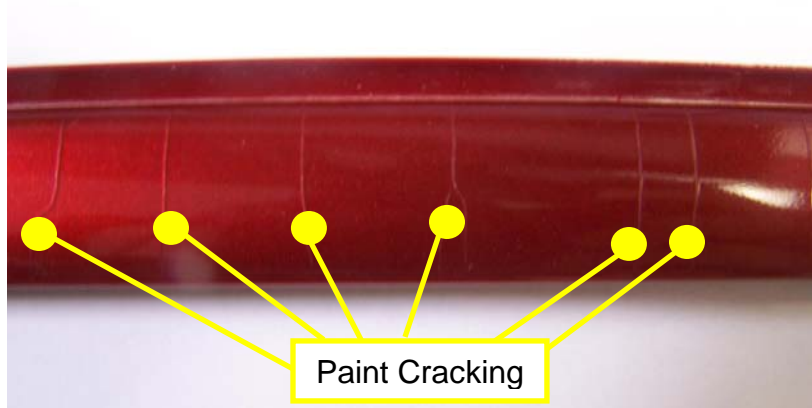


Figure 1 – Roof Molding

3. Using trim stick C-4755 remove the roof molding(s).
4. Remove all adhesive residue from the roof's surface with 3M 08984 General Purpose Adhesive Cleaner or equivalent (Fig. 2).



Figure 2 - Roof Seam

**NOTE: Do not use powered / wheel type adhesive removing tools. This may damage the seam sealer and/or painted surfaces of the roof seam.**

5. Install the new roof molding(s).
  - a. Begin at the front of the vehicle and align the molding with the roof and A-pillar as shown in (Fig. 3).

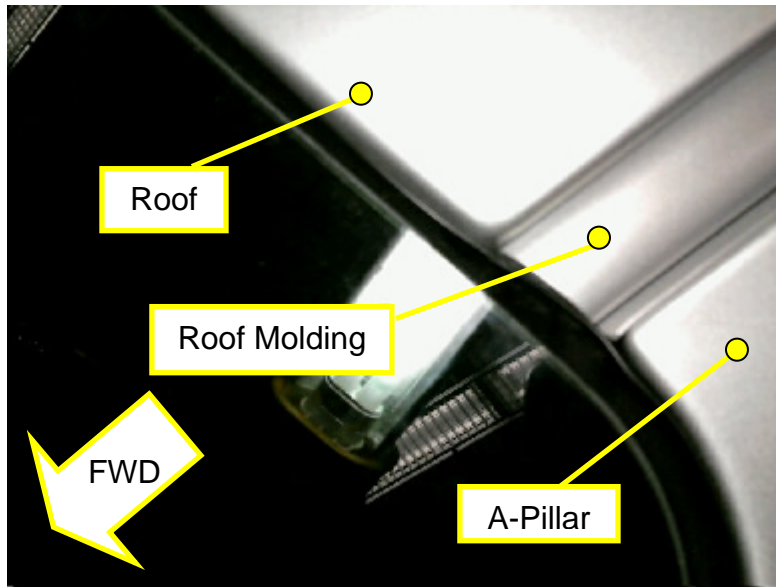


Figure 3 - Molding Alignment (Left Side Shown)

- b. Ensure proper adhesion by firmly pressing the molding.
6. Return the vehicle to the customer or dealer inventory.

**POLICY:** Reimbursable within the provisions of the warranty.

**NOTE: USE OF THE LABOR OPERATION INCLUDED WITH THIS SERVICE ACTION ON VEHICLES OTHER THAN THOSE INVOLVED MAY BE SUBJECT TO CHARGE BACK.**

**TIME ALLOWANCE:**

**LABOR OPERATION NO:**

23-02-67-90	Inspect Roof Molding (B)	0.2Hrs
23-02-67-91	Inspect Roof Molding and Replace One Side Only (B)	0.4Hrs
23-02-67-92	Inspect Roof Molding and Replace Both Right and Left Sides (B)	0.8Hrs

**FAILURE CODE:** ZZ - Service Action

If you have any questions, contact your Business Center.