



NUMBER: 23-017-11

GROUP: Body

DATE: May 03, 2011

This bulletin is supplied as technical information only and is not an authorization for repair. No part of this publication may be reproduced, stored in a retrieval system, or transmitted, in any form or by any means, electronic, mechanical, photocopying, or otherwise, without written permission of Chrysler Group LLC.

THIS SERVICE BULLETIN IS ALSO BEING RELEASED AS RAPID RESPONSE TRANSMITTAL (RRT) 11-042. ALL APPLICABLE UN-SOLD RRT VIN's HAVE BEEN LOADED. TO VERIFY THAT THIS RRT SERVICE ACTION IS APPLICABLE TO THE UN-SOLD VEHICLE, USE VIP OR PERFORM A VIN SEARCH IN TECHCONNECT. FOR VEHICLES NOT INCLUDED IN THE RRT VIN LIST, APPLICATION OF THIS SERVICE BULLETIN TO SOLD UNITS IS BASED UPON THE CUSTOMER EXPERIENCING THE SYMPTOM/CONDITIONS. ALL REPAIRS ARE REIMBURSABLE WITHIN THE PROVISIONS OF WARRANTY.

SUBJECT:

Missing T-Handle Shift Knob, Bright Stainless Steel Pedal Kit, Embroidered Floor Mats, Car Cover And Stainless Steel Door Sills

OVERVIEW:

This bulletin involves inspecting for a t-handle shift knob and bright stainless steel pedal kit. Also inspect for floor mats, door sills and a car cover with the Challenger logo. If necessary install missing accessories depending on the vehicle transmission.

MODELS:

2011 (LC) Challenger

NOTE: This bulletin applies to vehicles built before February 11, 2011 (MDH 0211XX) equipped with Mopar Interior Appearance Group (sales code ACX).

SYMPTOM/CONDITION:

Missing t-handle shift knob, bright stainless steel pedal kit, embroidered floor mats, car cover and stainless steel door sills.

DIAGNOSIS:

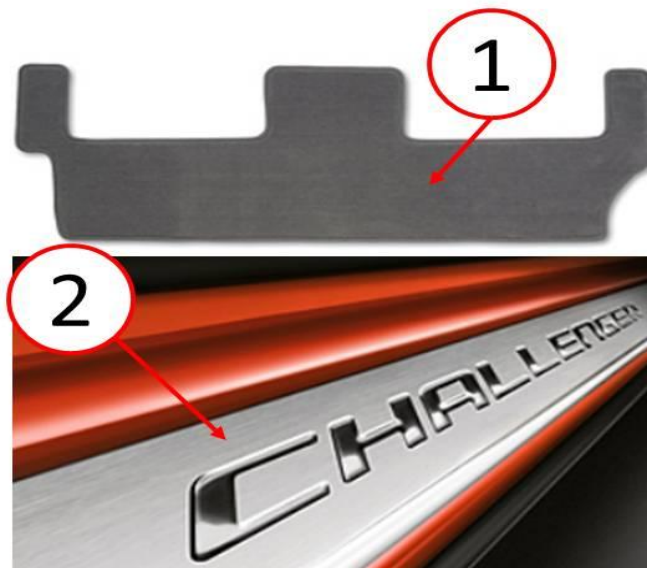
If a customer's VIN is listed in VIP or your RRT VIN list, perform the repair. For all other customers that describe the symptom/condition, perform the Repair Procedure.

PARTS REQUIRED:

Qty.	Part No.	Description
1 (AR)	82211234	Sills, Door
1 (AR)	82211154	Kit, Bright Stainless Pedal (Automatic Transmission Only)
1 (AR)	82211328AB	Cover, Car
1 (AR)	82212853	Mats, Floor
1 (AR)	82211622	Knob, T-Handle Shift (Automatic Transmission Only)

REPAIR PROCEDURE:

1. Inspect the vehicle for a t-handle shift knob (Automatic Transmission Only) and bright stainless steel pedal kit (Automatic Transmission Only). Additionally inspect for floor mats, car cover, door sills with the Challenger logo embroidered or stamped on the part (Fig. 1) (Fig. 2).

**Fig. 1 Inspection**

- 1 - Rear Seat Floor Mat
 - 2 - Door Sill
-



Fig. 2 Inspection

- 1 - Pedal Kit
- 2 - T-Handle Shift Knob
- 3 - Car Cover

-
- 2. Were any of the components installed?
 - a. Yes>>> Return the vehicle to the customer or dealer inventory.
 - b. No>>> Proceed to [Step #3](#).
 - 3. Is this vehicle equipped with a manual transmission?
 - a. Yes>>> Proceed to [Step #9](#).
 - b. No>>> Proceed to [Step #4](#).

4. Remove the existing shift knob as shown in (Fig. 3).

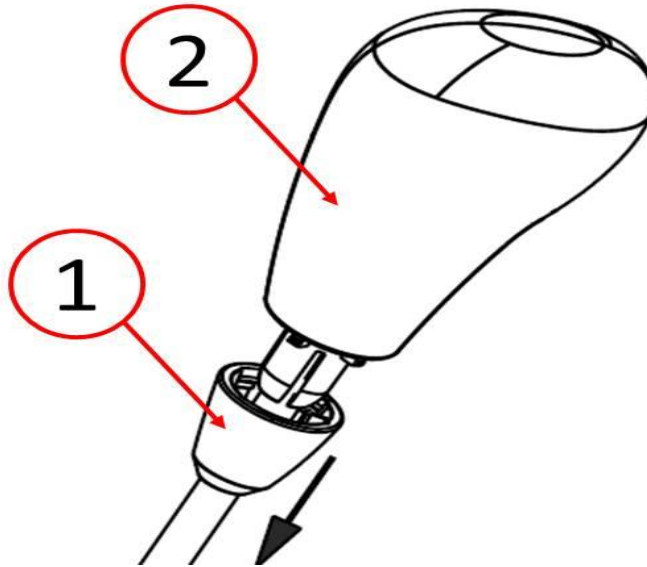


Fig. 3 Shift Knob

- 1 - Retaining Clip
 - 2 - Shift Knob
-

5. Install the new T-handle shift knob by rotating it into position and securing the set screw as shown in (Fig. 4).

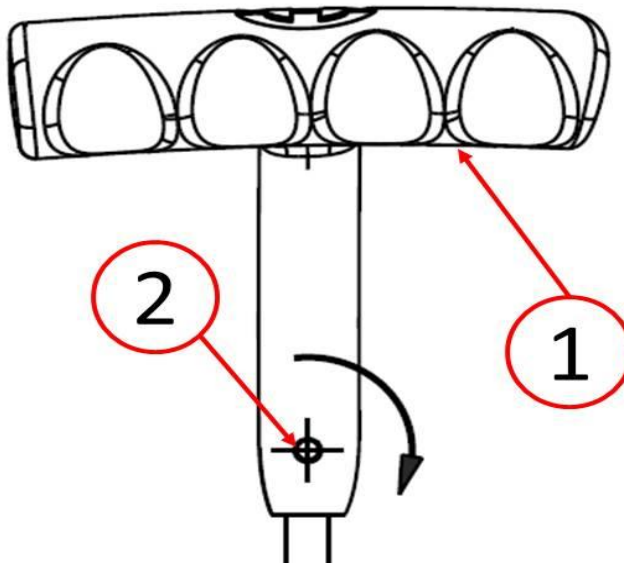


Fig. 4 T-Handle Shift Knob

- 1 - T-Handle Shift Knob
 - 2 - Set Screw
-

6. Remove the current accelerator and brake pedal insert (Fig. 5).

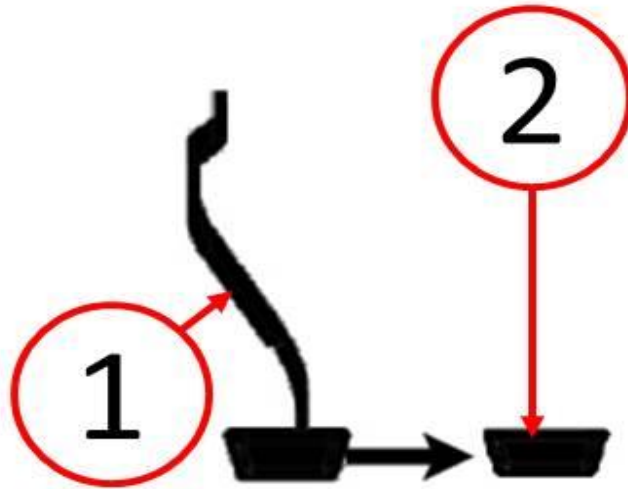


Fig. 5 Pedal Overlay - Brake Pedal Shown

- 1 - Brake Pedal
 - 2 - Brake Pedal Insert
-

7. Spray a soap and water mixture to the back of the pedal insert to ease installation and slide over the correlating pedal ([Fig. 6](#)).

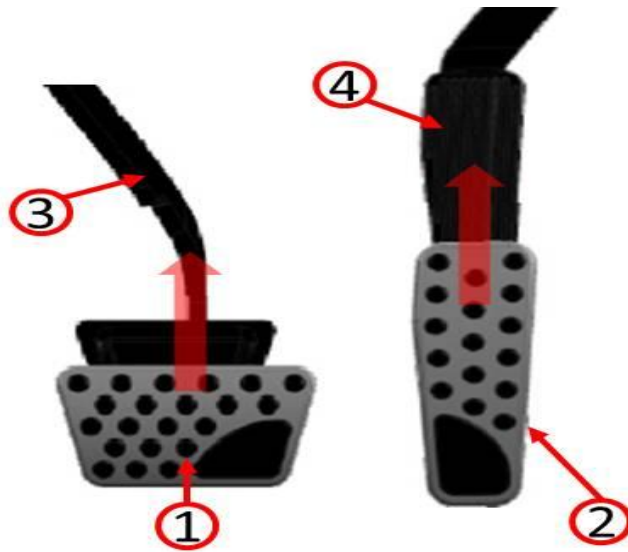


Fig. 6 Inserting Pedal Overlays

- 1 - Brake Pedal Insert
 - 2 - Accelerator Pedal Insert
 - 3 - Brake Pedal
 - 4 - Accelerator Pedal
-

- Using a flat blade screwdriver secure the locking tabs to the backside of the pedal (Fig. 7).

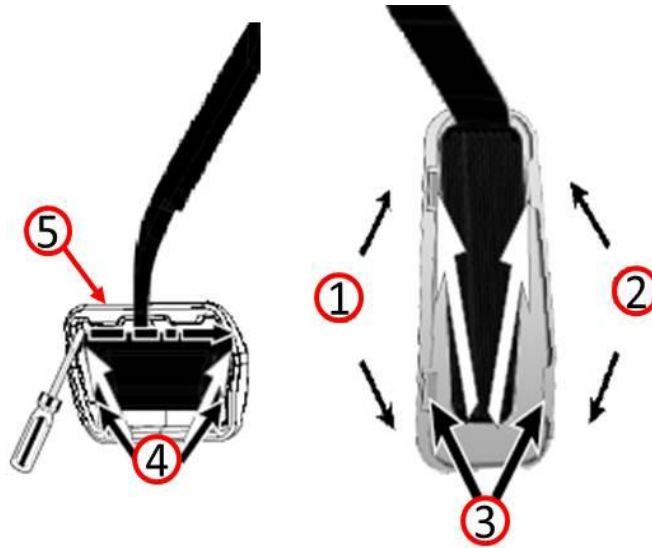


Fig. 7 Secure Pedal Inserts

- 1 - Locking Tabs
- 2 - Locating Tabs
- 3 - Accelerator Pedal Installation Direction
- 4 - Installation Direction
- 5 - Brake Pedal

-
- Remove and replace the floor mats with the new Challenger embroidered mats.
 - Install the new right and left stainless steel door sills.
 - Place the car cover in the trunk of the vehicle.
 - Return the vehicle to the customer or dealer inventory.

POLICY:

Reimbursable within the provisions of the warranty.

TIME ALLOWANCE:

Labor Operation No:	Description	Amount
23-99-67-90	Inspect Only (D)	0.2 Hrs.
23-99-67-91	Inspect and install T-Handle Shift Knob, Stainless Steel Door Sills, Floor Mats, Pedal Kit And Place The Car Cover In The Vehicle Trunk (Automatic Transmission Only) (D).	0.4 Hrs.
23-99-67-92	Inspect And Install Stainless Steel Door Sills, Floor Mats And Place The Car Cover In The Vehicle Trunk (Manual Transmission Only) (D).	0.2 Hrs.

FAILURE CODE:

ZZ	Service Action
----	----------------