



NUMBER: 23-031-11

GROUP: Body

DATE: August 10, 2011

This bulletin is supplied as technical information only and is not an authorization for repair. No part of this publication may be reproduced, stored in a retrieval system, or transmitted, in any form or by any means, electronic, mechanical, photocopying, or otherwise, without written permission of Chrysler Group LLC.

SUBJECT:

Outer Door Belt Weatherstrip Cracked And/Or Drooping Down

OVERVIEW:

This bulletin involves inspecting the outer door belt weatherstrip for a cracking and/or drooping condition at the quarter window and if necessary replacing the belt weatherstrips.

MODELS:

2008 - 2011 LC Challenger

NOTE: This bulletin applies to vehicles built before July 12, 2011 (MDH 0612XX).

SYMPTOM/CONDITION:

The customer may experience cracked and/or drooping outer door belt weatherstrip at the quarter window.

DIAGNOSIS:

If the customer describes the symptom, perform the Repair Procedure.

PARTS REQUIRED:

Qty.	Part No.	Description
1	55399122AF	Weatherstrip Assy - Outer Belt RH
1	55399123AF	Weatherstrip Assy - Outer Belt LH
1	04575884AD	Weatherstrip Assy - Inner Belt RH
1	04575885AD	Weatherstrip Assy - Inner Belt LH

SPECIAL TOOLS/EQUIPMENT REQUIRED:

C-4755	Trim Stick
--------	------------

REPAIR PROCEDURE:

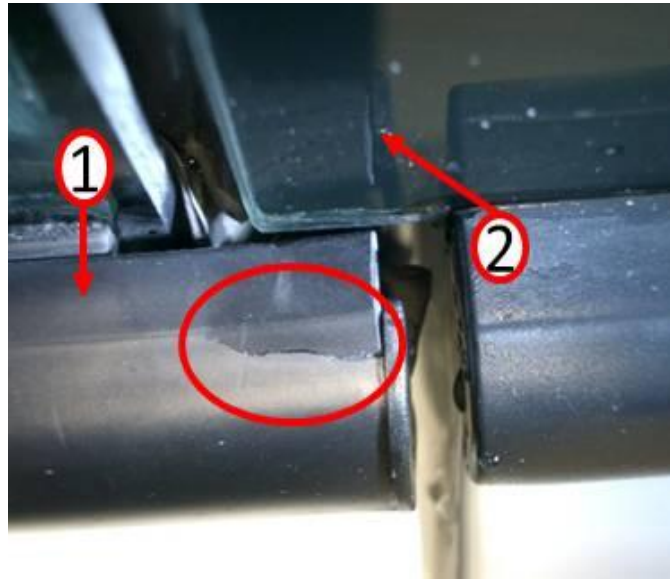


Fig. 1 Cracking Condition

- 1 - Outer Belt Weatherstrip
 - 2 - Quarter Window
-



Fig. 2 Drooping Condition

- 1 - Outer Belt Weatherstrip
 - 2 - Quarter Window
-

1. Does the driver and/or passenger door outer belt weatherstrip appear to be cracked and/or drooping at the end near the quarter window (Fig. 1) & (Fig. 2)?
 - a. Yes >>> Proceed to [Step #2](#).
 - b. No >>> Further diagnosis required, this bulletin does not apply.
2. Remove both door outer and inner belt weatherstrips. Refer to the detailed procedures available in DealerConnect>TechCONNECT> under: Service Info> 23-Body> Door - Front> MOLDING> Removal.

NOTE: Due to appearance variation between original and revised parts, all door weatherstrips must be replaced with required parts listed.

3. Install revised door outer and inner belt weatherstrips. Refer to the detailed procedures available in DealerConnect>TechCONNECT> under: Service Info> 23-Body> Door - Front> MOLDING> Installation.

POLICY:

Reimbursable within the provisions of the warranty.

TIME ALLOWANCE:

Labor Operation No:	Description	Amount
23-51-09-90	Inspect and Install Outer and Inner Door Belt Weatherstrips	0.9 Hrs.

FAILURE CODE:

ZZ	Service Action
----	----------------